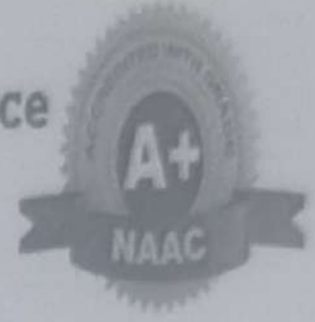




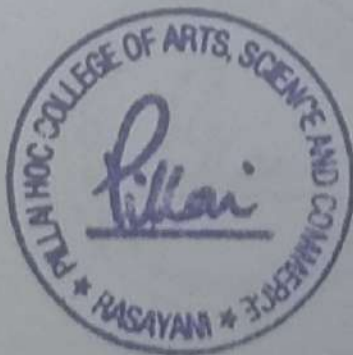
Mahatma Education Society's  
**Pillai HOC College of Arts, Science and Commerce**  
Pillai HOCL Educational Campus, Rasayani  
NAAC Accredited with A+ Grade in Cycle 2  
(ISO 9001: 2015 Certified)



# 7.1.7 QnM.

## Divyangjan friendly and Barrier Environment

### (A.Y. 2023-24)

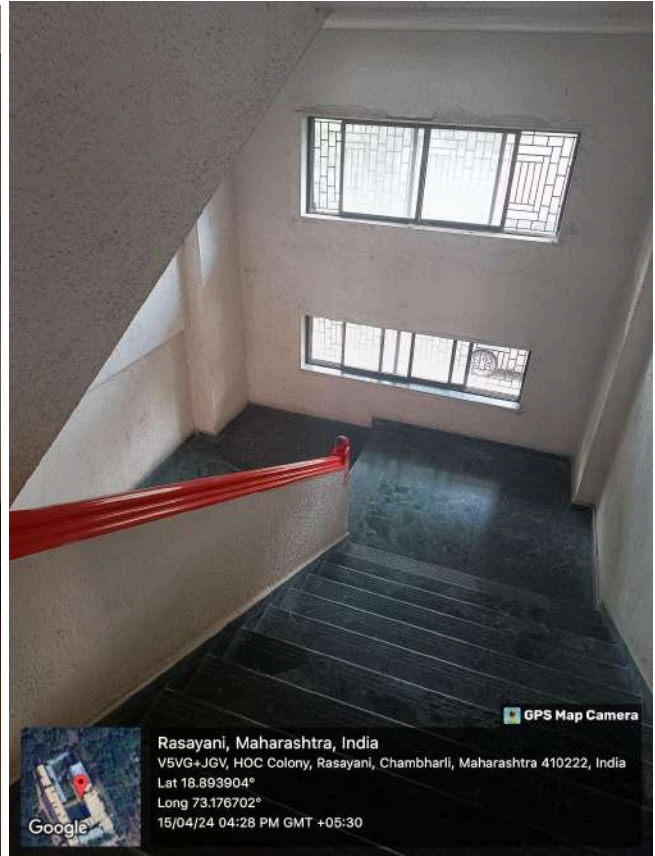


*Patam*

Principal

Mahatma Education Society's  
Pillai's HOC College of Arts,  
Science and Commerce  
HOC Educational Campus,  
Rasayani, Tal. Khalapur,  
Dist. Raigad, Pin-419 207.

## Ramps and Elevators



**Disabled-friendly washrooms:**



**Wheelchair:**



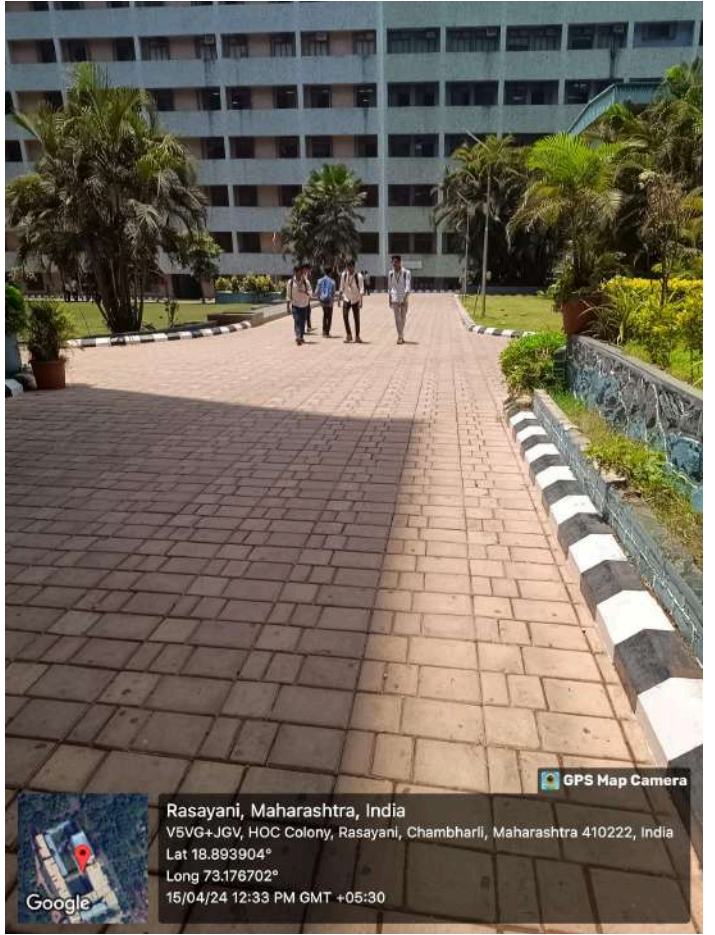
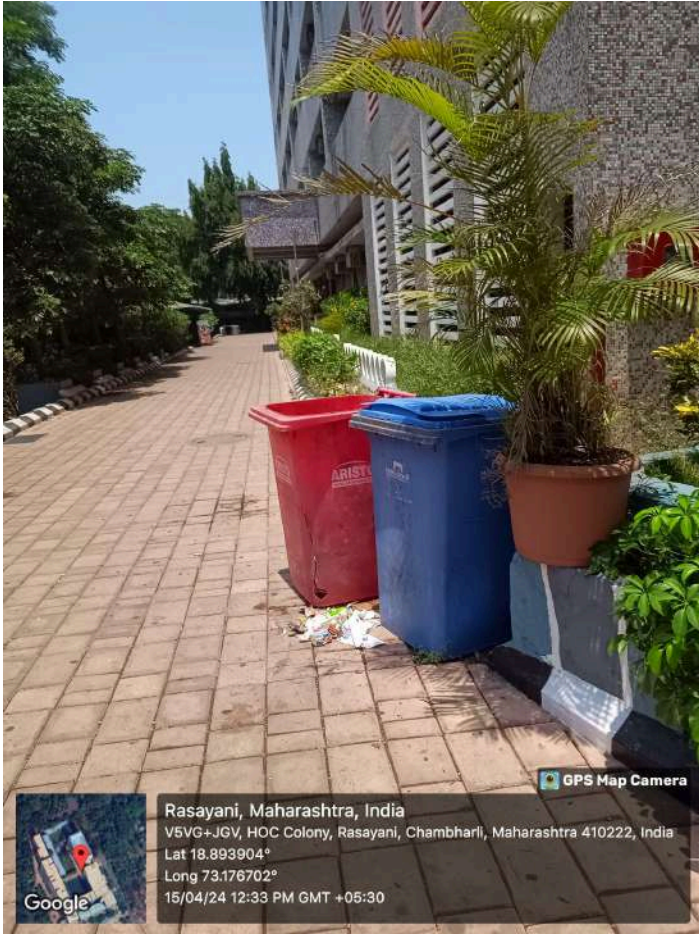
GPS Map Camera

Raigad, Maharashtra, India  
V5VG+FGH, HOC Colony, Raigad, Maharashtra 410207, India  
Lat 18.893957°  
Long 73.176663°  
16/11/21 03:39 PM

## Signages to help students and faculty members:



**Pathways:**



## 7.1.7 Details of Software provided for the assistance:

<b>Name of Software:</b>	NVDA (Non Visual Desktop Access)
<b>Type of Software:</b>	Open source
<b>Version:</b>	NVDA version 2024.1
<b>Compatibility:</b>	Windows
<b>Download Link:</b>	<a href="https://www.nvaccess.org/download/">https://www.nvaccess.org/download/</a>



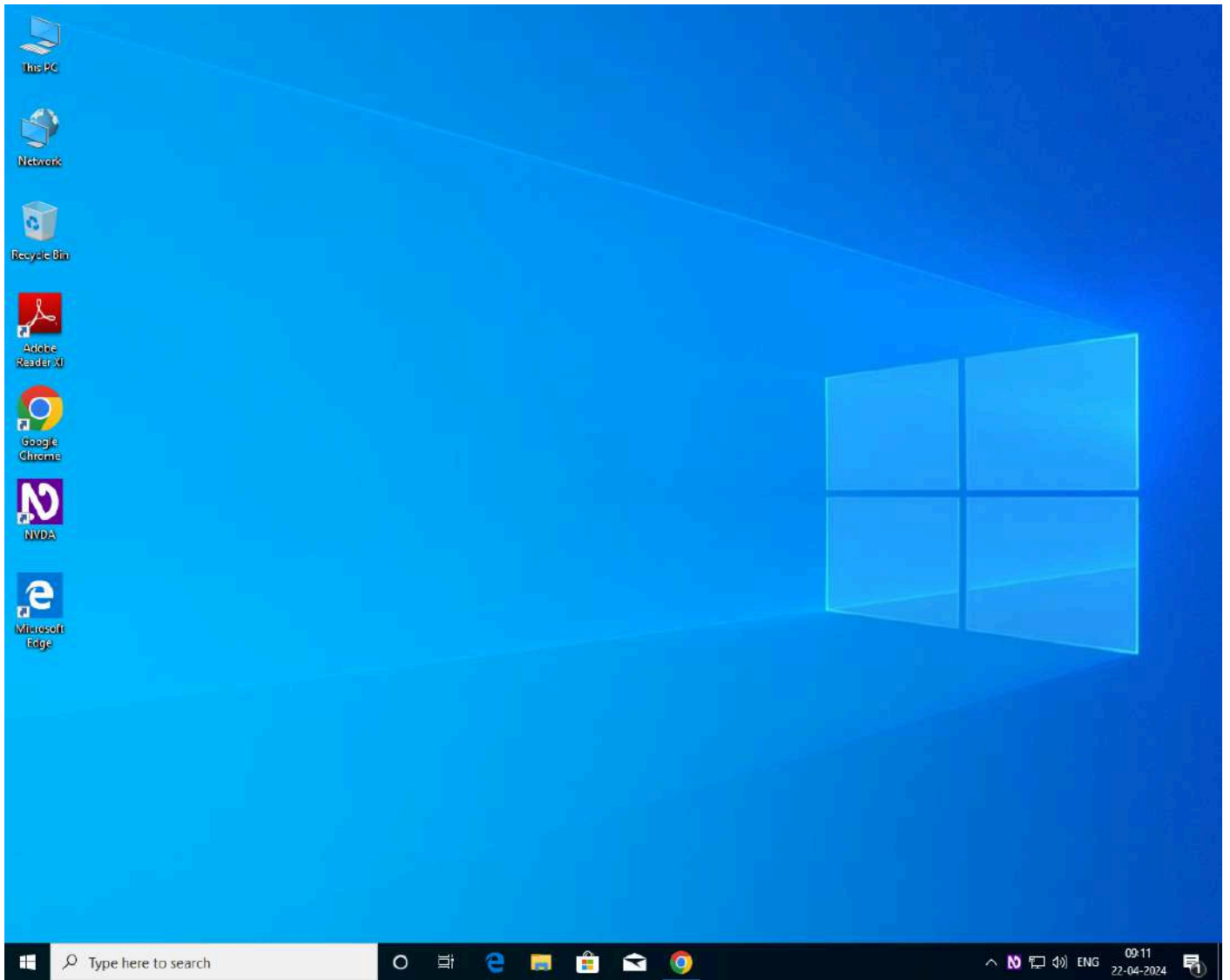
**Download** and experience **NVDA TODAY!**



### NVDA VERSION 2024.1

The NVDA screen reader can be downloaded free of charge by anyone. We do this because we believe everyone, especially the world's poorest blind people deserve access to computers and a way out of poverty. If you have the means, no matter how big or small, please consider making a donation before downloading NVDA. We rely on donations and grants to continue improving NVDA and to ensure it remains compatible with the world's rapidly changing technology.

**Please note: NVDA is only available for PCs running Microsoft Windows 8.1 and later.**  
If you require a version of NVDA which can still run on Windows 7, please download the older [NVDA 2023.3 for Windows 7](#) instead.  
If you require a version of NVDA which can still run on Windows XP or Vista, please download the much older [NVDA 2017.3 for Windows XP](#) instead.  
*NV Access does not recommend or support running these older versions on newer Operating systems.*



(NVDA Software is installed)





Mahatma Education Society's

College Code: 870

**PILLAI HOC COLLEGE OF ARTS, SCIENCE & COMMERCE**

Pillai HOCL Educational Campus, HOC Colony, Rasayani, Via. Panvel, Dist. Raigad. Pin 410207

Tel: 02192 - 252005 / 250066 Fax : 02192 - 252067

Website : [www.phcasc.ac.in](http://www.phcasc.ac.in) Email : [phcasc@mes.ac.in](mailto:phcasc@mes.ac.in)

*Affiliated to the University of Mumbai, Approved by Government of Maharashtra*

### Policy Document for Differently-Abled People

This policy document has been prepared to spread awareness regarding the facilities available in the campus for differently-abled people and to ensure strict adherence in supporting the beneficiaries.

1. The infrastructural resources in the campus are barrier free and accessible for all kinds of people with disabilities.
2. Our college ensures participation of differently abled students in various curricular, co-curricular and extracurricular activities.
3. Our college is keen on providing assistance and support to the students with disabilities in the learning process apart from regular class hours.
4. Abiding by the norms of the University, we provide the assistance of scribe and other facilities to the differently abled during examination.
5. The institution spreads awareness among the students, members of teaching and non-teaching fraternity regarding the facilities and amenities available for differently abled persons with an intention to support and help the latter in using the resources.

### Infrastructural, Technological and Academic Support for Differently-Abled

As per Person with Disabilities Act (PWD) 2016, any sort of discrimination against differently abled persons is strictly prohibited in the campus. Adhering to the aforesaid Act, the institution ensures various provisions and facilities such as ramps, hand rails, lifts, braille signage, auditory signals, tactile flooring etc.

Our college ensures barrier-free environment in the campus where people with disabilities can move safely and freely and use the facilities and resources provided.

#### **Ramps for persons with disabilities**

Ramp-Rails are built in addition to steps on the ground floor of the main building in the campus. The ramps are designed as per the requirements of the differently able people.



*[Signature]*  
Principal  
Mahatma Education Society's  
Pillai's HOC College of Arts  
Science and Commerce  
HOC Educational Campus,  
Rasayani, Tal. Khatapur,  
Dist. Raigad. PIN - 410 207



### **Lift Facility**

Our college has various provisions for barrier free access for students, staff, visitors and differently abled people. There are two lifts in the building which aid the persons with loco motor disabilities for free movement and access.

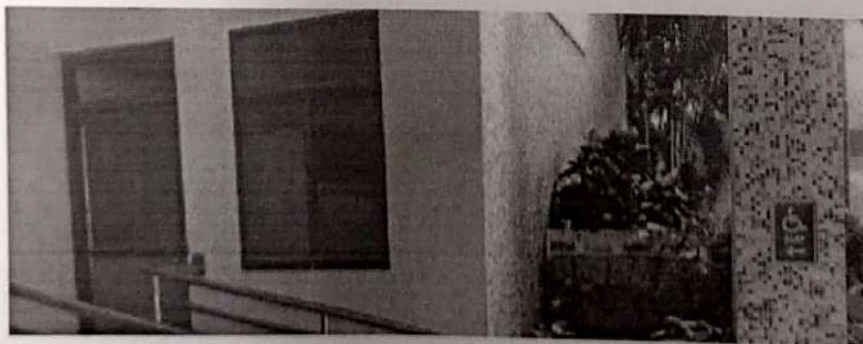


### Differently-Abled Friendly Washrooms

There are two differently abled friendly washrooms on the first two floors of the building which have fittings that are comfortable and convenient to the differently abled people.



### Sign Boards



## Assistive Technology for Differently Abled

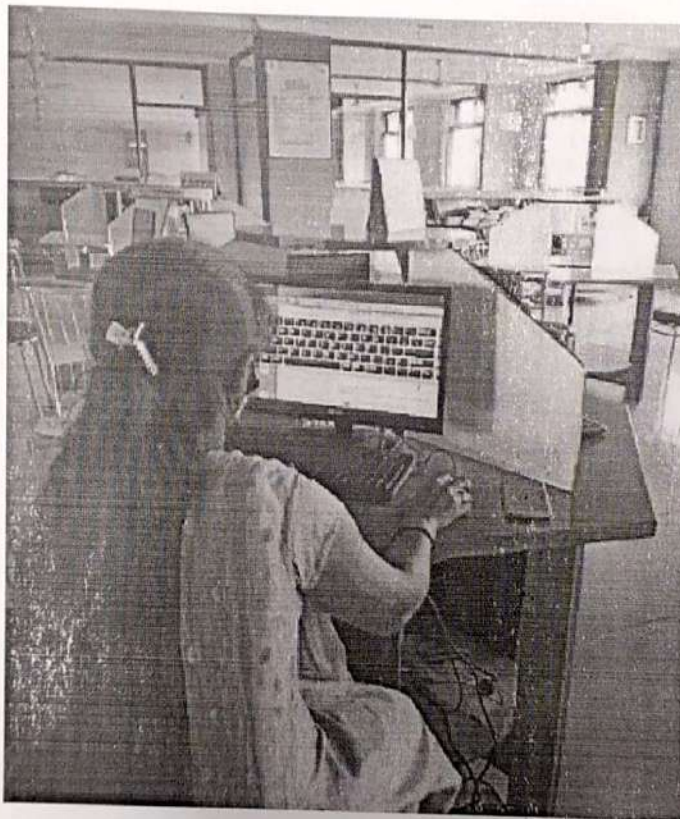
The computers installed in the campus have the following features and facilities:

**1. Narrator:**

A narrator is a screen-reading app that is built into Windows OS that helps the visually disabled persons to complete common tasks on computers. It reads and narrates the text displayed on the screen.

**2. Magnifier:**

A screen magnifier is a software application that increases the size of the text and graphics on your computer screen. By default, it opens in full screen and the mode of display can be selected as per the requirement.



*Lalau*

Principal  
Mahatma Education Society's  
Pillai's HOC College of Arts  
Science and Commerce  
HOC Educational Campus,  
Rasayani, Tal. Khalapur,  
Dist. Raigad, PIN - 410 207